

B A R T H



28 and 30 foot diesel pushers

B r e a k a w a y
Realize Your Dream



T

he tradition of excellence surrounds you...

step up and relax into your dreams with all of the luxuries of home.

The Breakaway® offers you sophisticated amenities with confidence that has become synonymous with the Barth name.

Each hand-built Breakaway is designed with practical layouts and visually pleasing decor –

Breakaway

elegance down to the finest detail. Spacious luxury has been united with superior craftsmanship and top performance.

To assure smooth sailing, years of research and development have produced a patented aluminum body that incorporates the aircraft industry's unitized

construction design. All joining points are riveted, rather than welded to absorb bumps and jolts from over-the-road use.

In this exclusive design, the frame, exterior panels and rivets are all manufactured from the same tempered alloy. With climate changes, these components expand and

contract in harmony, assuring durability and longevity. The light weight aluminum translates into fuel economy – over 12 miles per gallon.

Constructed with confidence and designed with your needs in mind, the Breakaway pampers you with features that are standard and spoils you with options.

The Motorhome With Aircraft Integrity

VEHICLE SYSTEMS

Front entrance on 28'. Front and side entrance door on 30'
Heavy-duty deadbolt lock
Heavy-duty windshield wipers with washer
Fingertip cruise control
Dash air conditioning, heating and defrosting
AM/FM cassette stereo with four speakers
Interior rear view mirror
Dual exterior remote control, heated mirrors with turn signals
ICC clearance lights with courtesy switch
Halogen sealed beam headlights
Large rear lamp cluster
Heavy-duty auto batteries
Emergency start switch
Air horn — roof mounted
Deluxe chrome solid aluminum bumpers with caps
Lighted exterior grab handle
Exterior compartment lights
Sikkens automotive exterior body paints in standard graphics

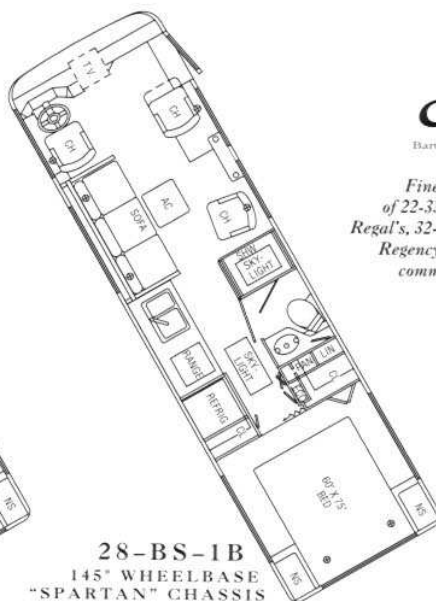
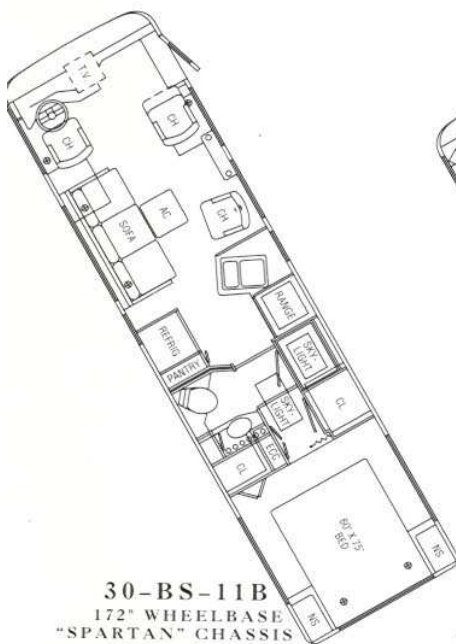
FURNITURE & FIXTURES

Cabinets: Oak Reed trim with Tawny Beige or Old English finish on birch
Recessed fluorescent lighting fixtures below cabinets
13" AC/DC color TV with remote above dash
Large, double door Dometic 3-way AES refrigerator
Two-burner recessed gas range
Sink covers
Microwave/convection oven, self venting located for ease of use
Expandable dining table
Fully adjustable cockpit seats with seat belts
Swing away sunvisors with lighted mirror
Queen width mattress (60" x 75") with bedspread,
pillow shams and pillows
Luxury windshield drapes
Stain-resistant luxury carpet
Window valance with duet shades
Skylight

OPTIONS

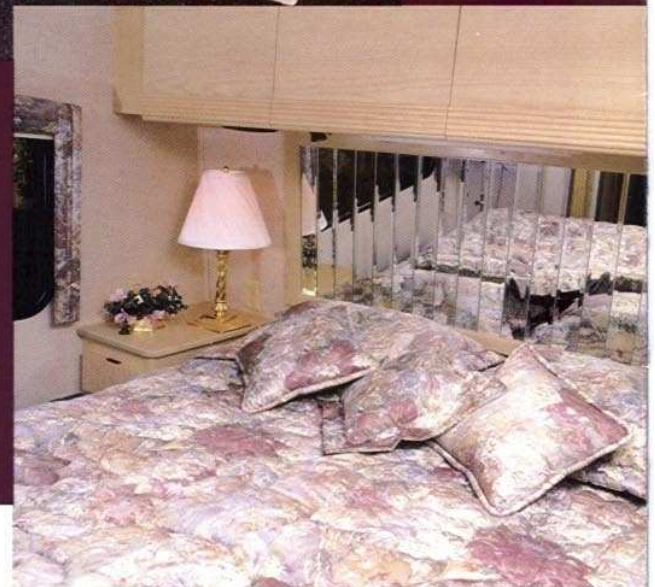
Awnings— roadside, curbside, bedroom
Backup alarm
Barth stepwell and floor mats
Burglar alarm system
Cabinet upgrade — Tawny Beige Oak, Dark Oak or Pickled Oak
CB radio — hand control
Defrost fans on dash
Docking lights — side
Fantastic vent fan with thermostat reverse motor
Generator capacity upgrade — 6.2 KW Kohler LP — with dual feed
Hair dryer — wall mount
Icemaker in refrigerator
InstaHot in galley
Leveling jacks, hydraulic (manual)
LPG leak detector with safety valve
Peninsula windows with rain cap
Quartz fog lights
Roof luggage rack and ladder
Seats: 6-way electric
Seats: Custom leather driver and companion
Second radio in bedroom
Second 13,500 BTU roof air conditioner with heat strip
Spotlight/floodlight — roof mounted, remote
Stainless steel wheel simulators
Trailer hitch with wiring harness and skid wheels
Telephone cable connection
Fold-down TV shelf in bedroom
TV and built-in cabinet in bedroom
TV cable connection
Closed circuit rear view camera and monitor with lights
VCR, portable AC
Vacuum cleaner — Hoover Porta Pak
Water purifier with countertop faucet

Realize Your Dream



Barth Motor Company

*Fine manufacturer
of 22-33 foot gas-powered
Regal's, 32-40 foot diesel-powered
Regency's and customized
commercial vehicles.*



*The
Breakaway
pampers you
with standard
features
and spoils you
with options.*



BARTH INC.
P.O. BOX 768
MILFORD, INDIANA 46542
(219) 658 - 9401
800 - 348 - 5088
FAX (219) 658 - 4151



BARTH BREAKAWAY

28' & 30'
Diesel Pusher

STANDARD EQUIPMENT

Front or side entrance door with heavy duty deadbolt lock	TV antenna with booster and two jacks
Heavy duty windshield wipers with washer	Power roof vent(s) with light(s)
Fingertip cruise control	Dual control aisle lights
Dash heating, a/c and defrost	VCR pre-wire
AM/FM cassette stereo with four speakers	Large stainless steel double galley sink and fixtures
Interior rearview mirror	Quiet demand water pump
Dual exterior remote control, heated mirrors w/turn signals	LPG water heater w/engine heat exchange & automatic ignition
100 clearance lights with courtesy switch	City water hook-up with remote control water tank fill
Quad sealed beam Halogen headlamps	Potable water fill
Large rear lamp cluster	Multiple low point water drains
Heavy duty automotive batteries	High quality RV toilet
Emergency start switch	Deluxe shower
Air horn - roof mounted	Poured marble bathroom sink
Deluxe chrome solid aluminum bumpers with caps	Twenty foot sewer hose with hidden carrier
Lighted exterior grab handle	Cabinets - oak head trim with choice of finish on Birch
Exterior compartment lights	Recessed lighting fixtures below cabinets
Sikkens exterior body paints in standard graphics	13" AC/DC color TV with remote above dash
170 amp battery isolator	Large double door Dometic 3-way AES refrigerator
Two 105 amp deep cycle coach batteries on slide-out tray	Two burner recessed gas range
75 amp converter w/battery charger	Sink covers
Shore power cord	Microwave/convection oven, self-venting with light
4.0 KW Kohler LP generator with hour meter	Expandable dining table or dinette
Roof A/C (13,500 BTU) with heat strip, Penguin low profile	Fully adjustable cockpit seats with seat belts
LPG furnace w/automatic ignition (2 ea on 30' model)	Swing away sunvisors w/lighted mirror
Patio lights	Queen width mattress w/pedspread, shams & pillows
Two 110V exterior duplex outlets	Luxury windshield drapes
LPG leak detector alarm	Stain resistant luxury carpet
Automatic electric door step	Window valances with dual shades
Systems monitor and controls	Skylight

Specifications

	<u>28'</u>	<u>30'</u>
Spartan EC 2000 chassis	X	X
Cummins 6BTA 5.9 turbocharged diesel engine	160 HP	190 HP
Allison four speed automatic transmission	AT542	AT542
Wheelbase	145"	172"
Exterior height approximately 10' 6" with roof air	X	X
Exterior width 96"	X	X
Exterior sidewalls - smooth riveted top, fluted riveted bottom	X	X
Front & rear suspension - leaf springs with H.D. shocks	X	X
Air over hydraulic disc brakes	X	X
19.5" steel disc wheels	X	X
Michelin radial tires	X	X
160 amp alternator	X	X
Custom steering wheel - tilt and telescoping column	X	X
GVWR (lbs.)	16,000	18,000
Front axle load capacity (lbs.)	6,000	6,000
Rear axle load capacity (lbs.)	10,000	12,000
Rear end ratio - 3:73	X	X
Towing capacity (lbs.)	20,000	20,000
Fluid capacities:		
Fresh Water (gallons)	44	44
Holding - Dual (gallons)	66	66
Fuel Tank (gallons)	60	60
LP Tank (gallons)	25	25

Prices are based on standard specifications, decors and paint schemes. Option prices are listed on the current Breakaway Option list. Other changes may result in additional charges as set by factory personnel. Due to continuing improvements, all prices and specifications are subject to change without notice.

All prices are F.O.B. Barth factory, Milford, Indiana and do not include Federal, State or local taxes, State Code Inspection fees, permits, licenses, transportation or other costs.

BARTH INC.
P.O. BOX 768
MILFORD, INDIANA 46542
(219) 658 - 9401
800 - 348 - 5086
FAX (219) 658 - 4161

BARTH BREAKAWAY



28' & 30'
Diesel Pusher

SUGGESTED LIST PRICE

<u>Size</u>	<u>Model</u>	<u>Retail Price</u>
28'	front entrance cocktail chair/table	\$108,300.00
30'	front entrance cocktail chair/table	\$113,300.00
30'	side entrance cocktail chair/table	\$113,500.00
30'	side entrance dinette/sleeper	\$113,700.00

SPECIFICATIONS

<u>Unit Size</u>	28'	30'
<u>Wheelbase</u>	145"	172"
<u>Heat</u>	35,000 BTU	35,000 BTU
<u>Water</u>	44 gallons	44 gallons
<u>Holding (Dual)</u>	66 gallons	66 gallons
<u>Fuel</u>	60 gallons	60 gallons
<u>GVWR</u>	16,000#	18,000#

Due to continuing improvements, all prices and specifications are subject to change without notice. All prices are F.O.B. Barth factory, Milford, Indiana and do not include Federal, State or local taxes, State code inspection fees, permits, licenses, transportation or other costs.

BARTH BREAKAWAY OPTIONS PRICE SHEET

RETAIL

Alcoa Aluminum Wheels - Upgrade (set of 6)	\$2,505.00
Awnings -Color _____	
Curbside - Main	1,220.00
Roadside	430.00
Bedroom -Each _____ Roadside _____ Curbside	290.00
Back-Up Alarm	85.00
Barth Stepwell and Floor Mats	120.00
Burglar Alarm System	735.00
Cabinet Upgrade	
Tawny Beige Oak, Dark Oak or Pickled Oak	675.00
CB Radio - Hand Control	275.00
Closed Circuit Rearview Camera and Monitor w/Lights	1,625.00
Defrost Fans - On Dash	200.00
Docking Lights - Side	360.00
Engine Upgrade - 190 HP	1,600.00
(28' model only, standard on 30')	
Fantastic Vent w/Thermostat & Reverse	160.00
Generator Upgrade - 6.2 KW Kohler	1,295.00
Hair Dryer - Wall Mount	55.00
Halogen Fog Lights	115.00
(Amber or Clear) - Chrome Plated	
InstaHot in Galley	245.00
Leveling Jacks, Hydraulic, Manual	3,085.00
(2 @ 6,000 lbs., 2 @ 9,000 lbs.)	
LPG Leak Detector w/Safety Valve	105.00
Peninsula Windows with rain caps (set of 8)	3,465.00
Refrigerator Upgrade - with IceMaker	615.00
Remote on/off Generator Switch In Bedroom	95.00
Roof Luggage Rack & Ladder	265.00
Seats	
6-way Electric Driver	475.00
Custom Leather - Each	880.00
Second Radio in Bedroom	315.00
Second 13,500 BTU Penguin A/C with Heat Strip	825.00
Spotlight/Floodlight - Roof Mounted, Remote	280.00
Telephone Cable Connection	65.00
Trailer Hitch With Wiring Harness	
and Skid Wheels	545.00
TV (ac/dc) 13" & Built-In Cabinet - Bedroom	695.00
TV Cable Connection	55.00
TV Shelf, Fold Down - Bedroom	95.00
VCR - Portable AC (installed)	595.00
Vacuum Cleaner, Hoover Porta Pac	145.00
Water Purifier w/Countertop Faucet	145.00
Wheel Simulators	295.00
Window - Bath (18" X 24")	
Standard Window	150.00
Peninsula Window with rain cap	355.00
Window - Rear Full View	
Standard Window	95.00
Peninsula Window with rain cap	505.00
Retail Customer Pick-up and Check-Out	300.00

8/26/91

R203-2